

# SuPRA

SUSTAINABLE  
POLYMER  
RESEARCH  
ARENA



# SuPRA – Sustainable Polymer Research Arena

## An arena for polymeric materials and processing

Within the arena we aim to:

- **Interact** with researchers to communicate industry needs.
- **Inspire** and support researches to do research that fulfill industry needs
- **Provide** the opportunity for researchers to test research in an industrial relevant environment.
- **Enable** increased uptake of research results for implementation in products.




# Different companies and different product






  
**SCANIA**

  
LONG-HAULAGE

  
construction

  
distribution

  
**Husqvarna Group**



**Thule Group»**



# Different companies similar thinking

Scania, Husqvarna and Thule are companies with

- Strong brands
- Leading market position
- Global presence
- Demanding customers
- Long company history
- People with passion for innovation



# Why are plastics important?

## Advantages



Versatile



Low density



Low cost

## Disadvantages



Fossil-based



Difficulties in disposal



Hazardous substances

**There is a need for research to make plastics more sustainable**

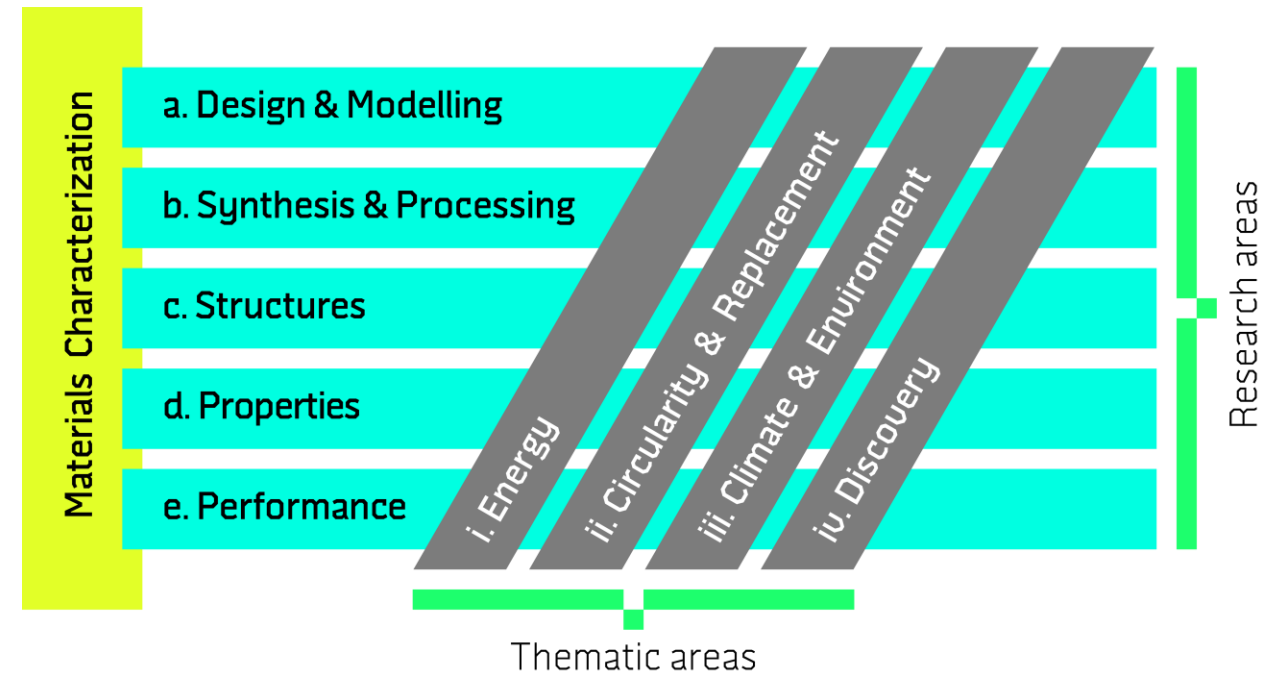
# Focus areas in SuPRA

## Green house gas emissions

Minimize green house gas emissions during all stages of the life cycle.

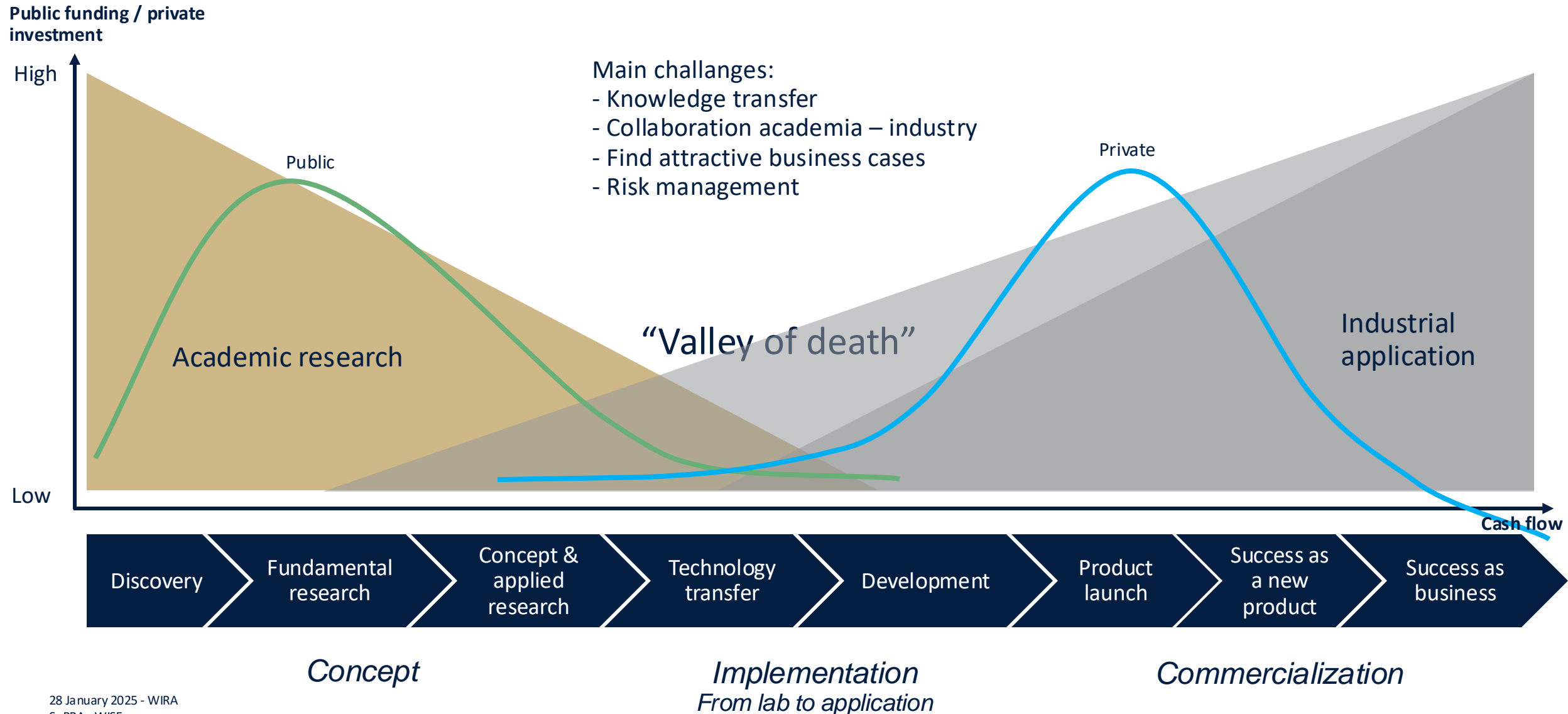
## Circular economy

Shift from the traditional linear model of plastic use and disposal to a circular economy, emphasizing resource efficiency, waste reduction, and sustainable practices.



*WISE thematic- and research areas*

# From research to product



# Interaction with researchers

Within SuPRA there will be different activities for researchers and other partners.

Cooperation with PIs from all participating universities is already established



## Events

Seminars and conferences



## PhD courses

Courses with industrial approach for PhD students.



## Study visits

Visits at Swedish plastic industry.



# Summary

- The research within the WISE program is important for the green transition of the industry.
- SuPRA will promote the exchange and interaction between industry and researchers so that industrial relevant research within the field polymers can be conducted.
- SuPRA will be an arena for researcher to test ideas in an industrial relevant environment to increase the uptake of ideas for further development and implementation in products.

# SuPRA

**SUSTAINABLE  
POLYMER  
RESEARCH  
ARENA**



**SCANIA**