

INTERNAL

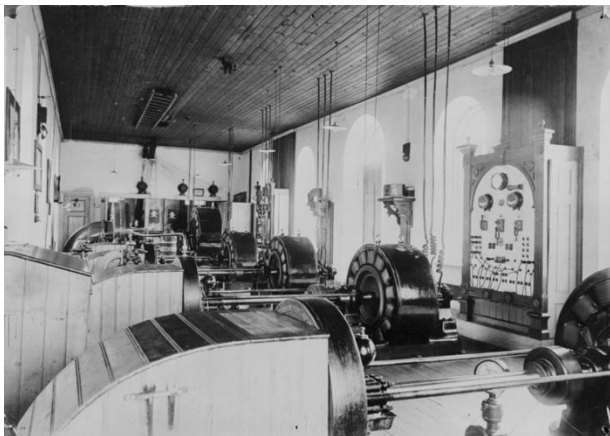
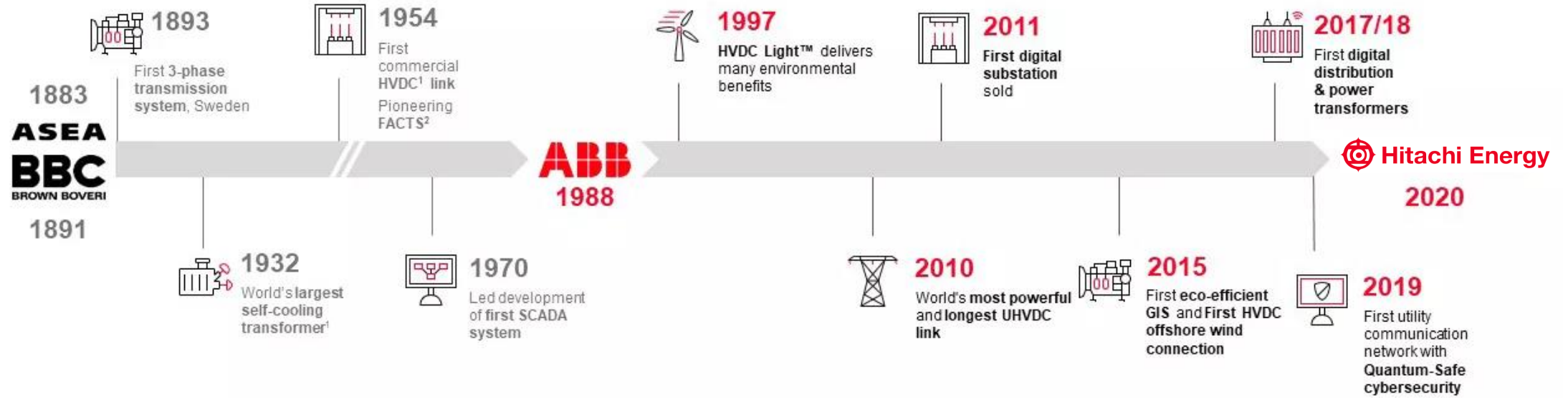
HITACHI
Inspire the Next

Hitachi Energy WISE Networking Day 2025

2024-11-04

© 2024 Hitachi Energy. All rights reserved.





What do we do?



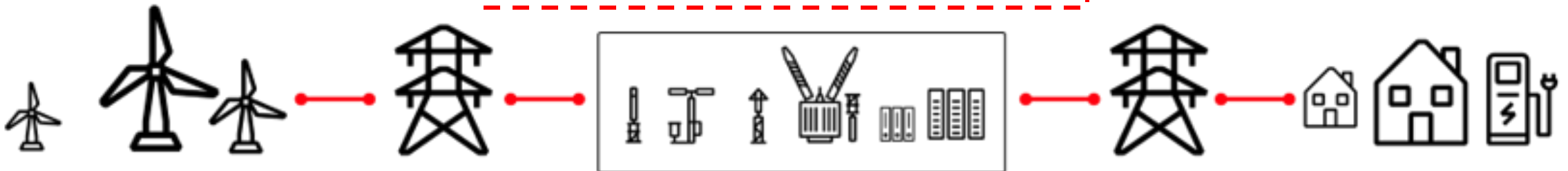
We are not an energy producer!



We enable energy to be transferred in an efficient and clean manner!



We are not an energy consumer!





Transformers



High voltage products



Grid integration



Grid automation

50,000 employees

90+
countries with
200 offices

~250
years' heritage
combined

5,500
sales employees
& field engineers

13,000
engineers &
R&D scientists

Four Business Units

**Grid
Automation**

**High Voltage
Products**

Grid Integration

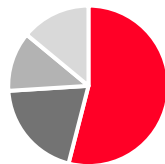
Transformers

Customers



- Transport & Infrastructure
- Utilities
- Industry

Offering



- Services
- Software & Automation
- Systems
- Products

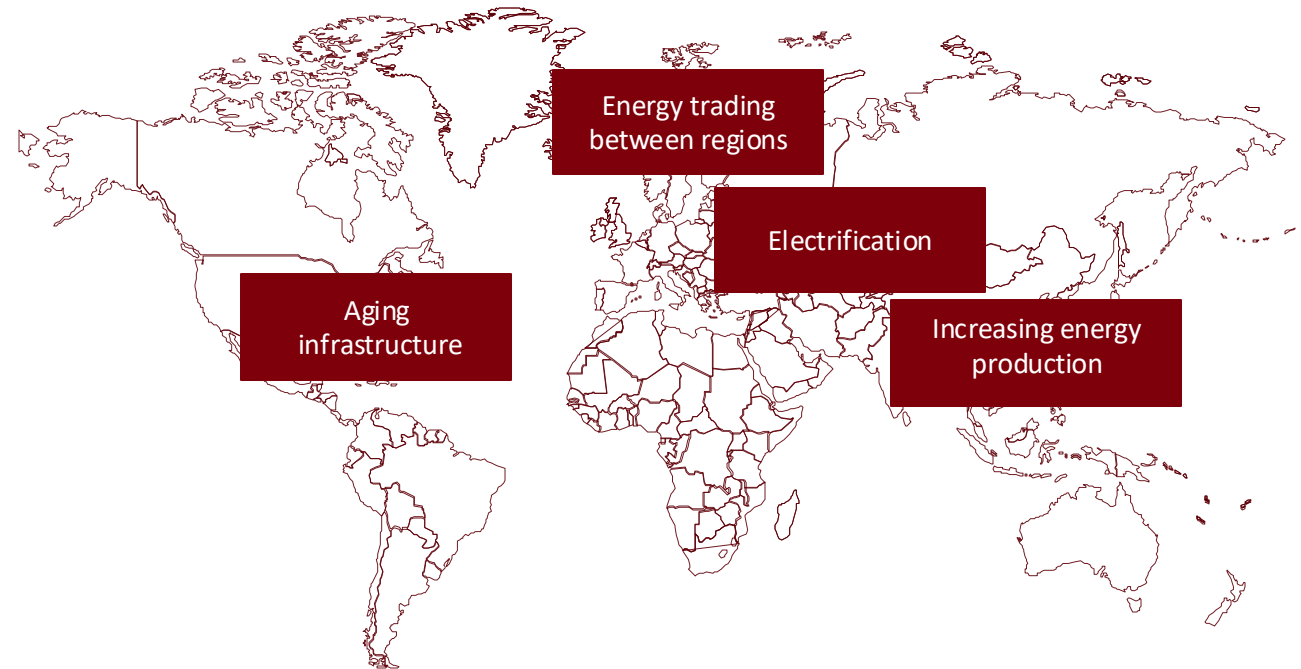
Geographies



- Asia, Middle East & Africa
- Americas
- Europe

Global drivers

- Load increases and need for improved grid reliability
- Aging infrastructure
- Energy trading
- Electrification
- Increasing energy production
- Renewable energy sources
- Continuing deregulation and privatization
- Safety and greener manufacturing/operations



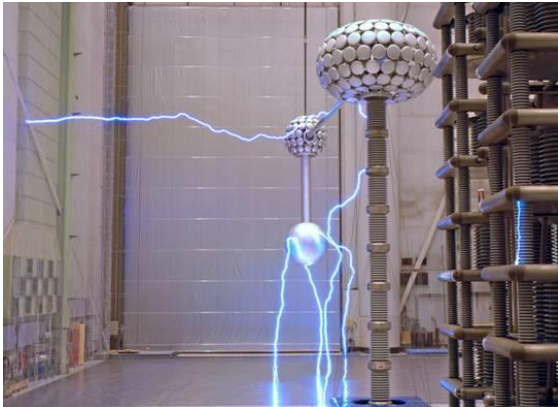
Materials

Electrical Insulation

- Cellulose
- Polymers
- Composites

Conductive Materials

- Magnetic Steel
- Electrical Connections



Testing and Analysis

Dielectric testing

- DC Physics

Analysis and Detection

- Analysis of process in situ
- Neutron Scattering
- Advanced X-ray



Process and Optimization

Processes

- Drying of Cellulose
- Composite Manufacturing
- Cellulose Laminate
- Polymer Casting

Optimization

- Physical Modelling
- ML to optimize



Strategic Partnerships

- Luleå University of Technology
- Uppsala University
- KTH
- Chalmers



Research Programs

- DCC
- NEXT



Digital Cellulose Center



Innovation Programs

- Collab Composite
- Scouting for startups
- Commercialization of Research



Collaboration is essential for success!



HITACHI
Inspire the Next 